



USING OPEN ACCESS TO EXPOSE DIGITAL ASSETS TO THE RESEARCH AND LEARNING COMMUNITIES

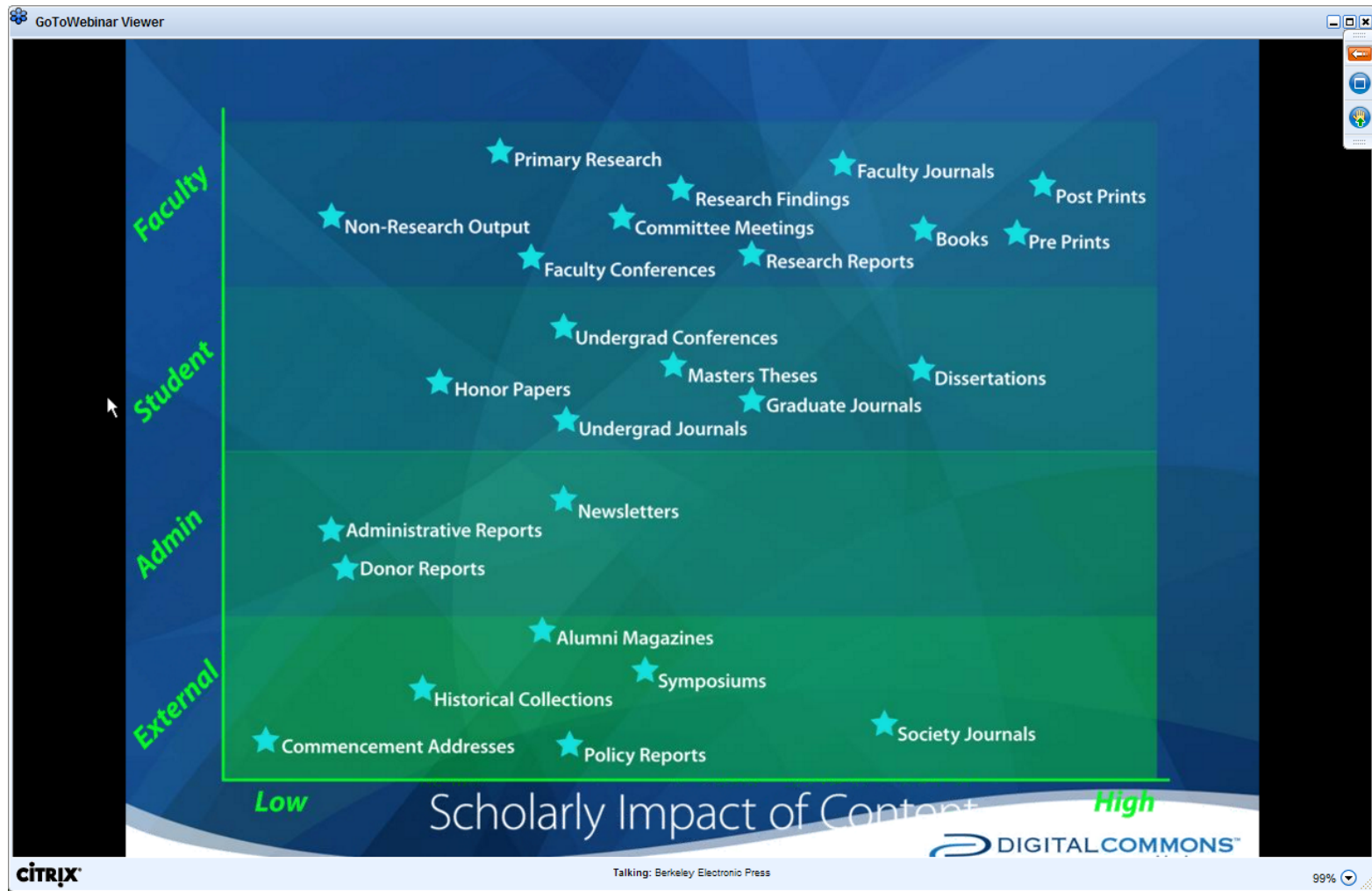
**Brief overview of the types of FSU open access
(OA) materials, resources, and OA repositories**

TABLE OF CONTENT

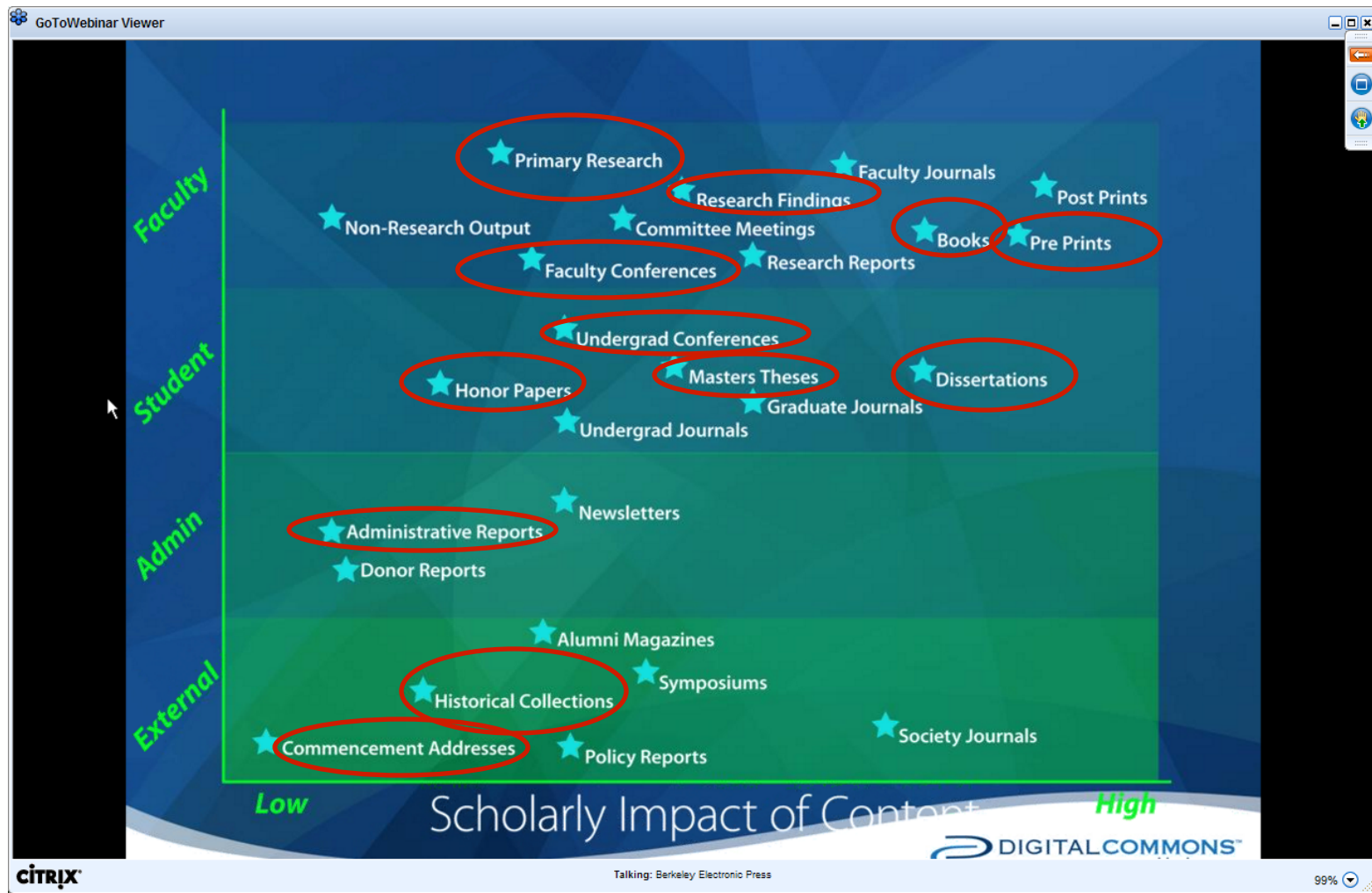
- Types of Open Access (OA) materials
- Types of Open Access (OA) materials currently available in FSU libraries OA repositories
- Types of Grey Literature (i.e. non-traditional publishing, preprints, conference reports, etc.)
- FSU Libraries OA materials and grey literature
- OpenDOAR - The Directory of Open Access Repositories
- Preservation example - FSU OA faculty research
- Horizon Issues



TYPES OF OPEN ACCESS (OA) MATERIALS



TYPES OF OPEN ACCESS (OA) MATERIALS CURRENTLY AVAILABLE IN FSU LIBRARIES OA REPOSITORIES



TYPES OF GREY LITERATURE (I.E. NON-TRADITIONAL PUBLISHING, PREPRINTS, CONFERENCE REPORTS, ETC.)

- GreyNet International (2/3 of respondents to the Grey Literature Survey 2004 best described following document types)
 - <http://www.greynet.org/greysourceindex/documenttypes.html>
 - Note: addition or deletion to list are consider via contact Grey Literature Network Service infor@greynet.org.



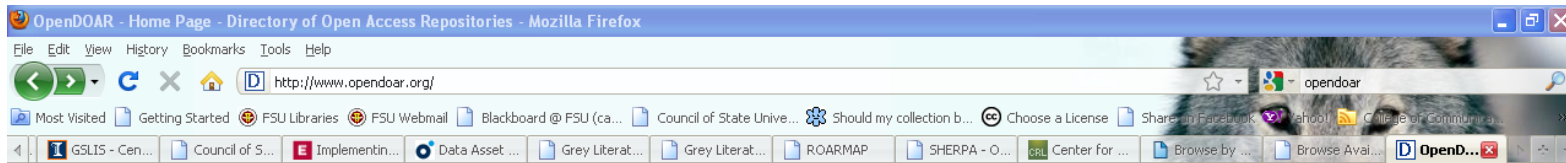
FSU LIBRARIES OA MATERIALS AND GREY LITERATURE

- FSU electronic theses and dissertations (ETDs)
 - <http://etd.lib.fsu.edu/ETD-db/ETD-browse/browse>
 - **Currently, 3811 available FSU ETDs**
- FSU Libraries Digital Collections
 - http://digitool.fcla.edu/R/?LOCAL_BASE=GEN01-FSU01&pds_handle=GUEST
 - **Currently, 13331 available “digitized” and “born digital” digital objects**
- Both FSU OA repositories are registered with and available via OpenDOAR



OPENDOAR – THE DIRECTORY OF OPEN ACCESS REPOSITORIES

[HTTP://WWW.OPENDOAR.ORG/](http://www.opendoar.org/)



OpenDOAR

Directory of Open Access Repositories

[Home](#) | [Find](#) | [Suggest](#) | [Tools](#) | [FAQ](#) | [About](#) | [Contact Us](#)

The Directory of Open Access Repositories - OpenDOAR

[Search for repositories](#) | [Search repository contents](#) | [List of repositories](#) | [Repository Statistics](#)

OpenDOAR is an authoritative directory of academic open access repositories. Each OpenDOAR repository has been visited by project staff to check the information that is recorded here. This in-depth approach does not rely on automated analysis and gives a [quality-controlled](#) list of repositories.

As well as providing a simple [repository list](#), OpenDOAR lets you [search for repositories](#) or [search repository contents](#). Additionally, we provide tools and support to both repository administrators and service providers in sharing best practice and improving the quality of the repository infrastructure. Further explanation of these features is given in a project document [Beyond the list](#).

The current directory lists repositories and allows breakdown and selection by a variety of criteria - see the [Find](#) page - which can also be viewed as [statistical charts](#). The underlying database has been designed from the ground up to include in-depth information on each repository that can be used for search, analysis, or underpinning services like text-mining. The OpenDOAR service is being developed incrementally, developing the current service as new features are introduced. A list of [Upgrades and Additions](#) is available.

Developments will be of use both to users wishing to find original research papers and for service providers like search engines or alert services which need easy-to-use tools for developing tailored search services to suit specific user communities.

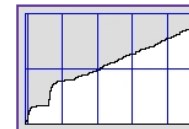
OpenDOAR is one of the SHERPA Services including [RoMEO](#) and [JULIET](#), run by the [Centre for Research Communications](#) (CRC). Current development work is [currently funded](#) by [JISC](#), with contributions from the CRC host organisation, the [University of Nottingham](#).

OpenDOAR has also been identified as a key resource for the Open Access community ([K.B.Oliver & R.Swain, 2006](#) - PDF) and identified as [the leader in repository directories](#) in a study by [Johns Hopkins University](#). OpenDOAR was one of the services which contributed to [SHERPA](#) being awarded the [2007 SPARC Europe Award for Outstanding Achievements in Scholarly Communications](#).

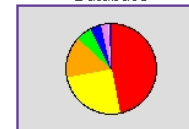
More information on the project is available on this site through the [About](#) page.

© 2006-2010, [University of Nottingham, UK](#). Last updated: 06-Sept-2010

OpenDOAR has
over 1700 listings!



Growth of the OpenDOAR Database



Repositories by Continent

JISC



PRESERVATION EXAMPLE - FSU OA FACULTY RESEARCH - BIOLOGICAL SCIENCE

Conspectus - Windows Internet Explorer
http://conspectus.metaarchive.org/collections/109

MetaArchive COOPERATIVE
Production Conspectus Data for MetaArchive PLN

Home

Content Providers Archives

All Collections
My Collections
Create New
Collection 109
Edit
Manage AUs
Delete Draft
Delete Test
Status

All Plugins
My Plugins
Create New

Collection

FSU Biological Scientist, Dr Prasad Diatomscapes I and II Collections
TIFFs

Archive: SDC
View: Collection Metadata
Plugin: edu.fsu.DiatomscapesPlugin by Florida State
Base Url: http://nas-725n.lib.fsu.edu/fsu_diatomscapes01_prasad/
Identifier: 109
Description: The Diatomscapes collection consists of diatoms ("microscopic, single-celled plants that thrive in freshwater, saltwater, brackish water and even semi-terrestrial environments" (Prasad, 2005)) and Radiolarian ("amoeboid protozoa that produce intricate mineral skeletons" (Reference.com, 2008)) digital images developed by Florida State University's Department of Biological Science faculty member, Dr. A.K.S.K. Prasad.

Archival units

Archival Unit Parameters	Preservation Status
One AU Defined By Base_Url	preserved view



PRESERVATION EXAMPLE - FSU OA FACULTY RESEARCH - BIOLOGICAL SCIENCE CONT.

Conspectus - Windows Internet Explorer
http://conspectus.metaarchive.org/collections/109/au/613/status

MetaArchive COOPERATIVE Production Conspectus Data for MetaArchive PLN

Home

Content Providers Archives

All Collections My Collections Create New

All Plugins My Plugins Create New

Collection

FSU Biological Scientist, Dr Prasad Diatomscapes I and II Collections TIFFs

Archival Unit

plugin edu.fsu.DiatomscapesPlugin
base_url http://nas-725n.lib.fsu.edu/fsu_diatomscapes01_prasad/

Preservation Status

Cache	Size (MB)	DiskUsage (MB)	Last Crawl	Crawl Result	Last Poll	Agreement
aub-cap	5479	5487.9	2010-09-03 20:01:19 UTC	Successful	2010-10-06 17:53:26 UTC	100.0
clem-fe	5479	5487.9	2010-10-20 08:37:54 UTC	Successful	2010-10-07 10:31:36 UTC	100.0
fsu-cap	5479	5487.9	2010-05-25 16:42:40 UTC	Successful	2010-10-11 21:50:10 UTC	100.0
lou-cap	5479	5488.4	2010-09-06 20:24:02 UTC	Successful	2010-10-07 17:06:21 UTC	100.0
rice	5479	5487.9	2010-07-22 14:31:02 UTC	Successful	2010-10-06 07:53:37 UTC	100.0
unt	5479	5480.5	2010-10-20 07:55:12 UTC	Successful	2010-10-08 13:37:58 UTC	100.0
vt-cap	5479	5487.9	2010-09-03 16:17:56 UTC	Successful	2010-10-07 14:24:21 UTC	100.0
Average	5479	5486.91428571429				100.0
Total	38353	38408.4				



HORIZON ISSUES

- Develop Metadata, Data, Content, Submission, and Preservation Policies
 - Register policies for both OA repositories in OpenDOAR & develop OAI base URLs
- Develop OA Repository Material Archiving
 - Register policies with ROARMAP (Registry of Open Access Repository Material Archiving Policies)
 - <http://www.eprints.org/openaccess/policysignup/>
- Publish, promote, and preserve FSU faculty research
- Digital Curation (Preservation) Policies
- Continue to strive to develop FSU OA resources, scholarly communication & electronic publishing



THANK YOU

- Questions, comments, and feedback.
- Contact via psmithii@fsu.edu for references.

